



Alford Theatre

Tech Spec



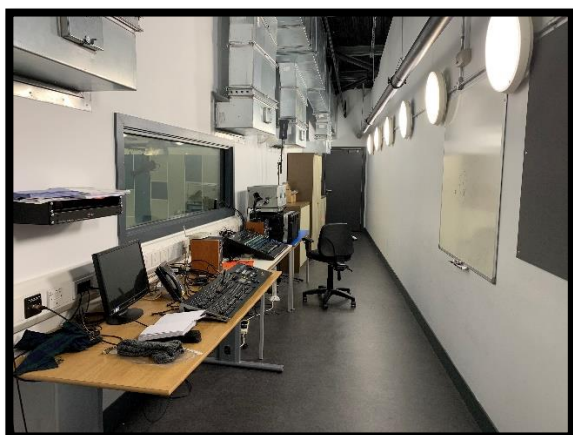
- Open floor stage
- Retractable seating
- 270 audience capacity
- Stage area width 9500mm
- Stage area depth 6000mm
- Main hall (seating retracted) 16000mm by 16000mm
- One changing room in backstage. Toilets in different wing of building

Equipment on site

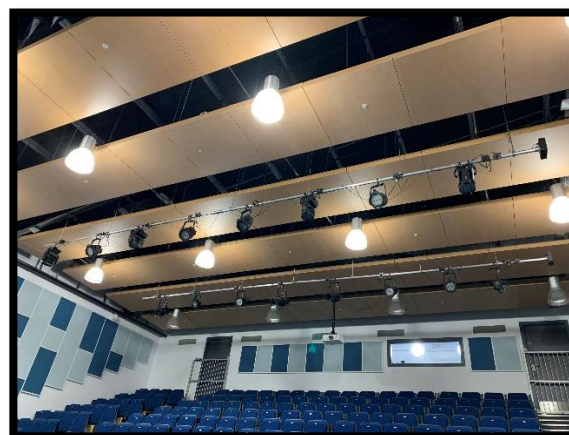
Linear Flood	4	Colorado Batten 72 Tour
Par Can 7 LED	8	Colorado 1 Tri-7 Tour
Colorado Q-Wash 419z LED	4	
Ellipsoidal Spotlight	4	Ovation ED-190WW
Par Can 14 LED	4	Colorado 1-Tri Tour
Par Can Style 14 LED	4	Colorado 2-Quad Zoom VW Tour
Tiered seating 250 seats	1	
Lighting Board	1	Strand
Induction Loop Amplifier	1	PDA Range 500/2
Lighting Board	1	Zero88 Jester 48
Monitor	1	Hanns.G
Sound Desk	1	Allen&Heath Qu-24

Light and sound equipment on fixed bars, extra equipment must be rigged on truss and winding towers, contact Arts & Heritage Technical Officer for details. More equipment available on request, refer to mobile kit list at end of document.

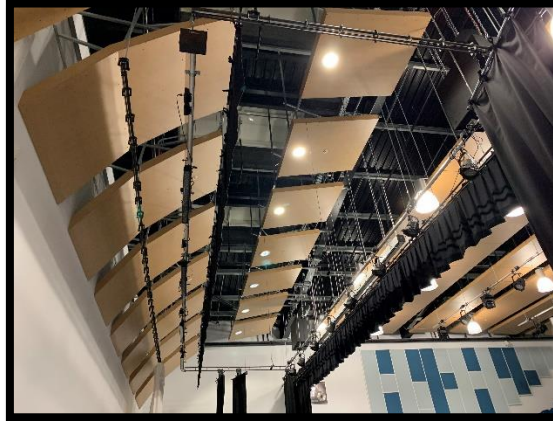
Control Room



Off stage bars



In Stage bars



Contacts

Venue address

Alford Community Campus, Greystone Rd, Alford, Aberdeenshire, AB33 8UR

Tel 01975 562922

Email alford.campus@aberdeenshire.gov.uk